



## 240 Andersons Inlet Road, Moyarra

3 | Beds

2 | Baths

2 | Cars

### Owned By The Same Family For Over 30 Years - Properties Like These Do Not Come Along Very Often - Act Fast!

Talk about a tree change! If you've ever dreamed of a rural lifestyle, then this country farmhouse offers up an amazing lifestyle with some of the best views in South Gippsland and the Bass Coast! Perched on a hilltop, you'll enjoy beautiful 360 degree vistas whichever window you happen to look out of. Located just 20 minutes from Inverloch's stunning beaches and perfectly positioned to take advantage of Wonthaggi & Leongatha's retail and Korumburra's cool cafes & Microbrewery, all while being less than two hours from Melbourne!

The easily managed 2.4 manicured acres feature in and out driveways, undercover parking for up four vehicles, a 3 bay machinery shed and a large fenced paddock. The solid brick and tile home provides a practical floorplan for family living and features a large and amazing art room / home office that you won't want to leave!

Owned by the same family for over 30 years - properties like these do not come along very often - act fast!

#### For Sale

Open Negotiation

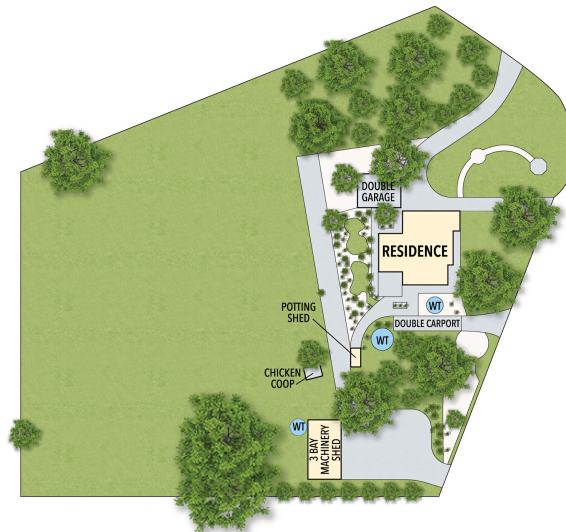
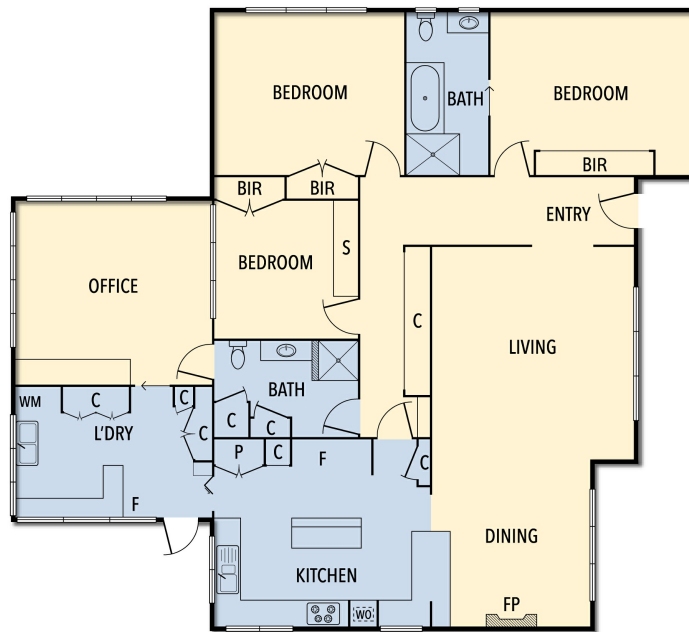
#### Contact

Leo Edwards  
0472 523 445

Christine Thorne  
0407 831 214



## 240 ANDERSONS INLET ROAD



THE ABOVE PLAN IS AN ARTIST'S IMPRESSION ONLY, IT INCLUDES ELEMENTS THAT ARE FOR DISPLAY PURPOSES ONLY AND MAY NOT BE TO SCALE.  
LANDSCAPING SHOWN IS INDICATIVE ONLY. DIMENSIONS ARE APPROXIMATE.

## 240 ANDERSONS INLET ROAD, MOYARRA